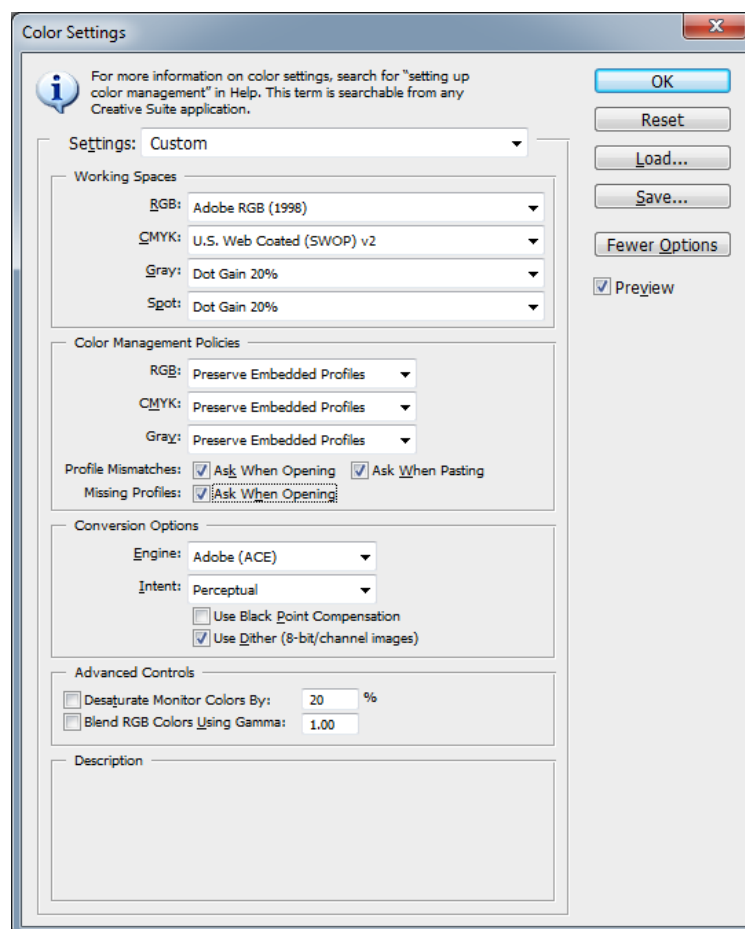


## How to print profile targets using Photoshop CS3

The below screen prints are taken from the Windows driver for an Epson 2100. Those using Mac systems or other printers will find the layout slightly different but the same principles hold true. The key points are to turn off all colour management and select the correct media type as ascertained through your checks described in our **Media Settings Guide**. Please refer to your manufacturer for more specific help.

Firstly, open **Photoshop CS3** and navigate to **Edit>Colour Settings**

In the dialog box that opens, first click on the **More Options** button on the right and then make sure your settings are like those in the following image

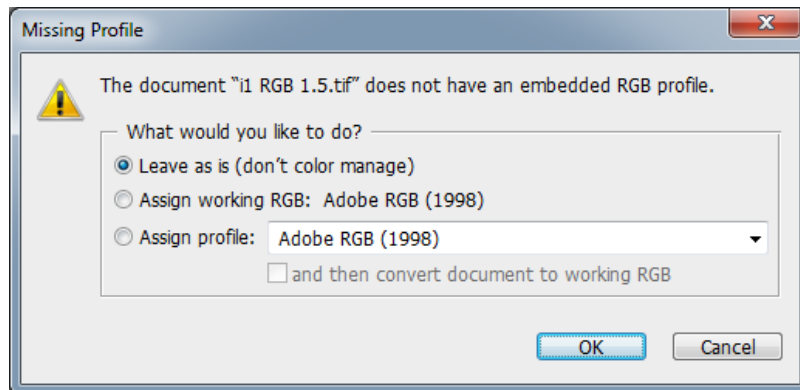


It is vitally important to ensure that the box for Missing Profiles Is ticked for Ask When Opening. This allows you to open the profiling targets without applying any colour profiles which will distort the raw data we need to produce an accurate profile.

Next, open the target file(s) you wish to use.

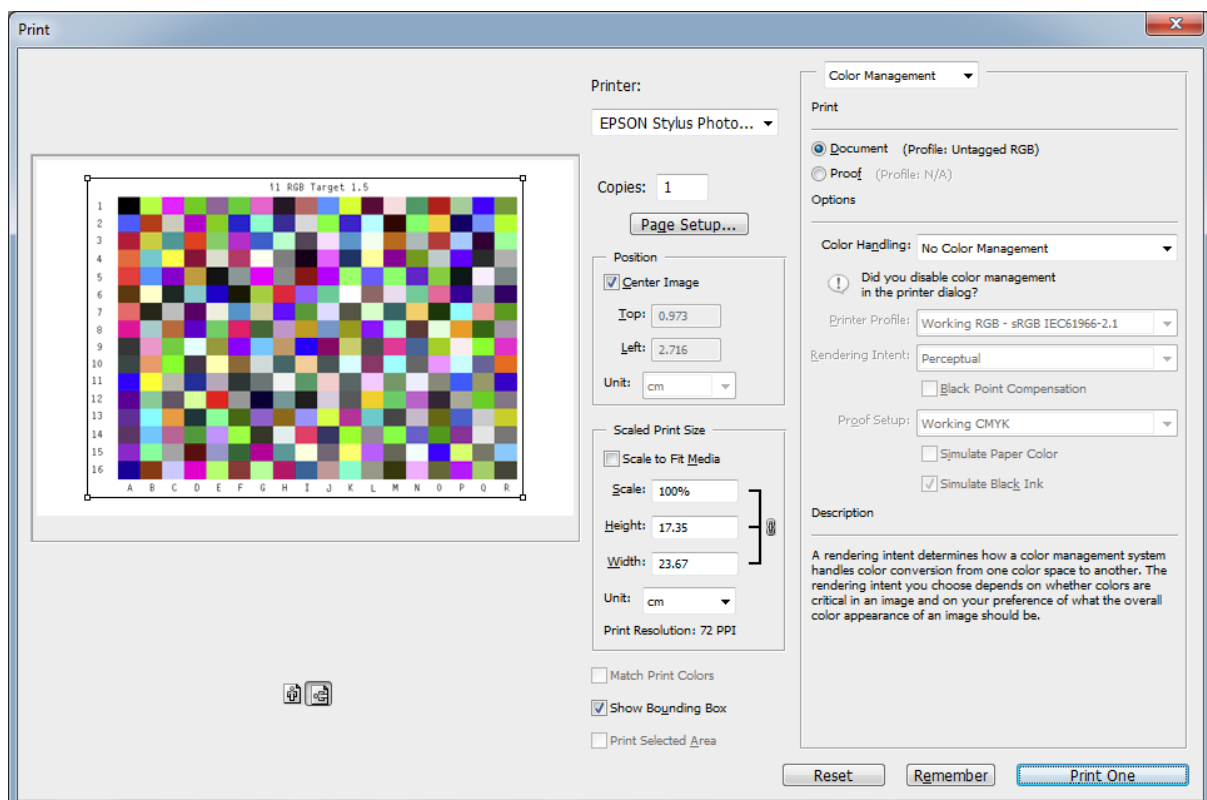
**Note:** In the case of the 288 Patch target there is only one file, for the 918 Patch target there are 2 files and for the 1728 patch target there are 3 files to be printed.

When opening you will be present with this dialog box:

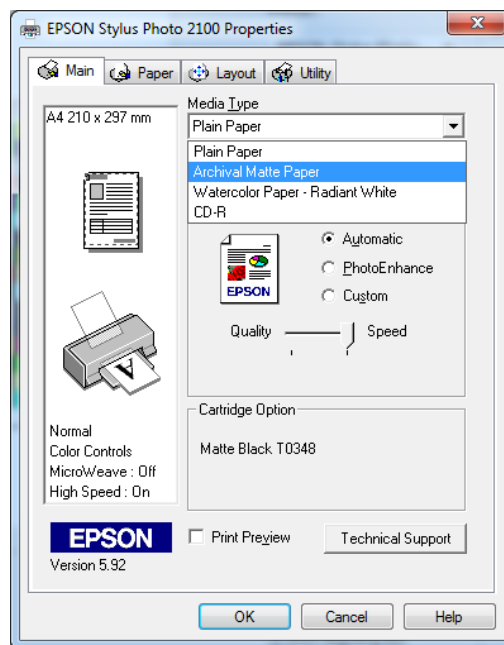


It is important that you select **Leave as is (don't color manage)** so that you don't apply a colour profile at this stage.

When the file is open select **Print** or use the keyboard shortcut **Cmd/Ctrl+P** and you will be present with the Print dialog box. Firstly you must select **Page Setup**

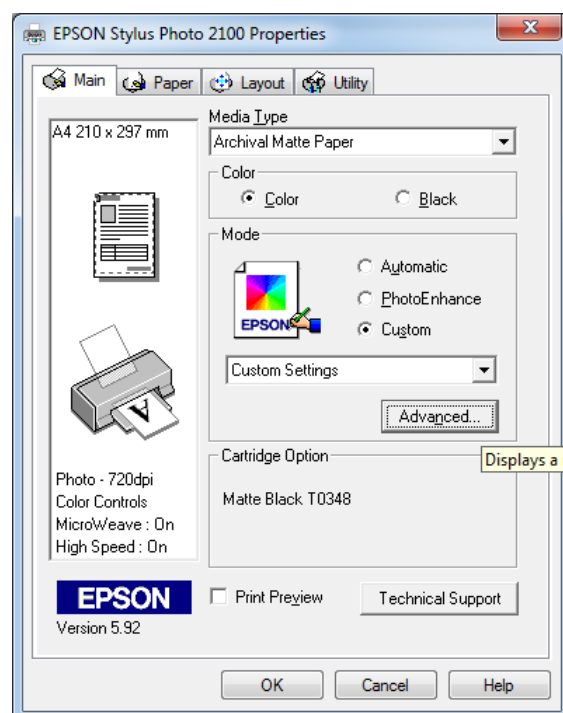


This will open the Printer driver settings. The below example is for the Epson 2100.

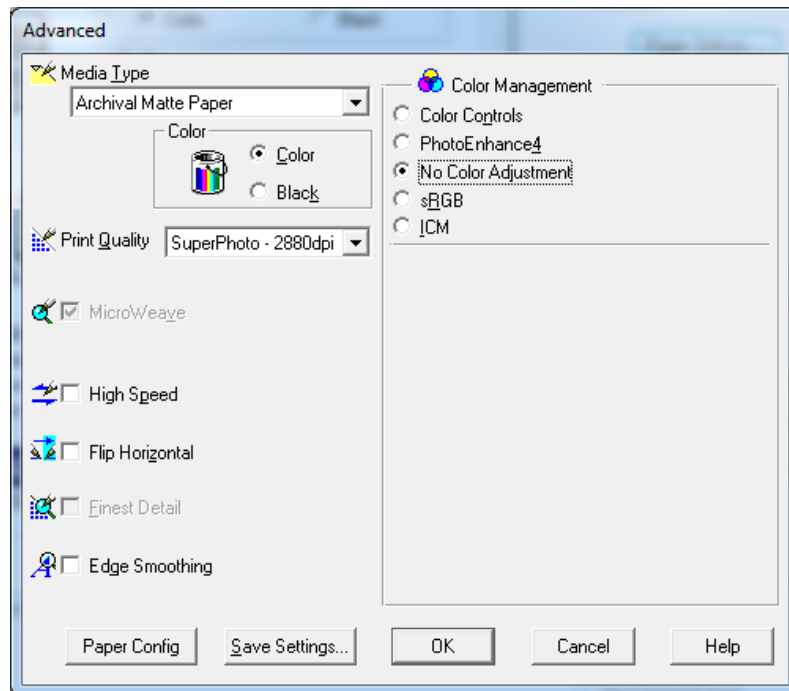


Here you must firstly use the **Media Type** section to select the media type you determined optimum from following our **Media Settings Guide** available from our website. You will notice in our example as we have the matte Black ink installed only Plain Paper, Archival Matte Paper, Watercolor Paper- Radiant White and CD-R are available. With the Photo black ink installed these options will be different.

After you have set the **Media Type** you must next select **Custom** from the Mode section and then select the **Advanced** button as shown below

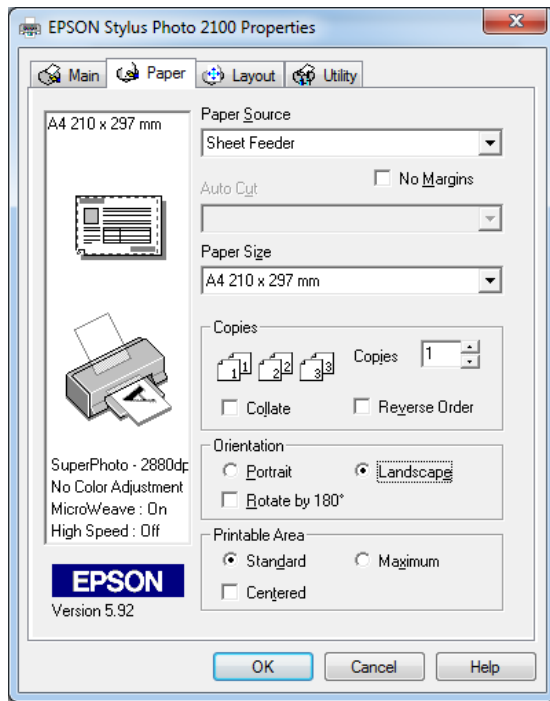


When the **Advanced** dialog box opens, you must turn off all colour adjustment initiated by the printer driver and select the quality settings you wish to use for the profile. For highest quality output we recommend uni-directional printing and selecting the highest resolution, which using an Epson printer is achieved by turning **High Speed** off and selecting **SuperPhoto -2880dpi** as the print quality. Be sure to also select **No Color Adjustment** in the **Color Management** panel

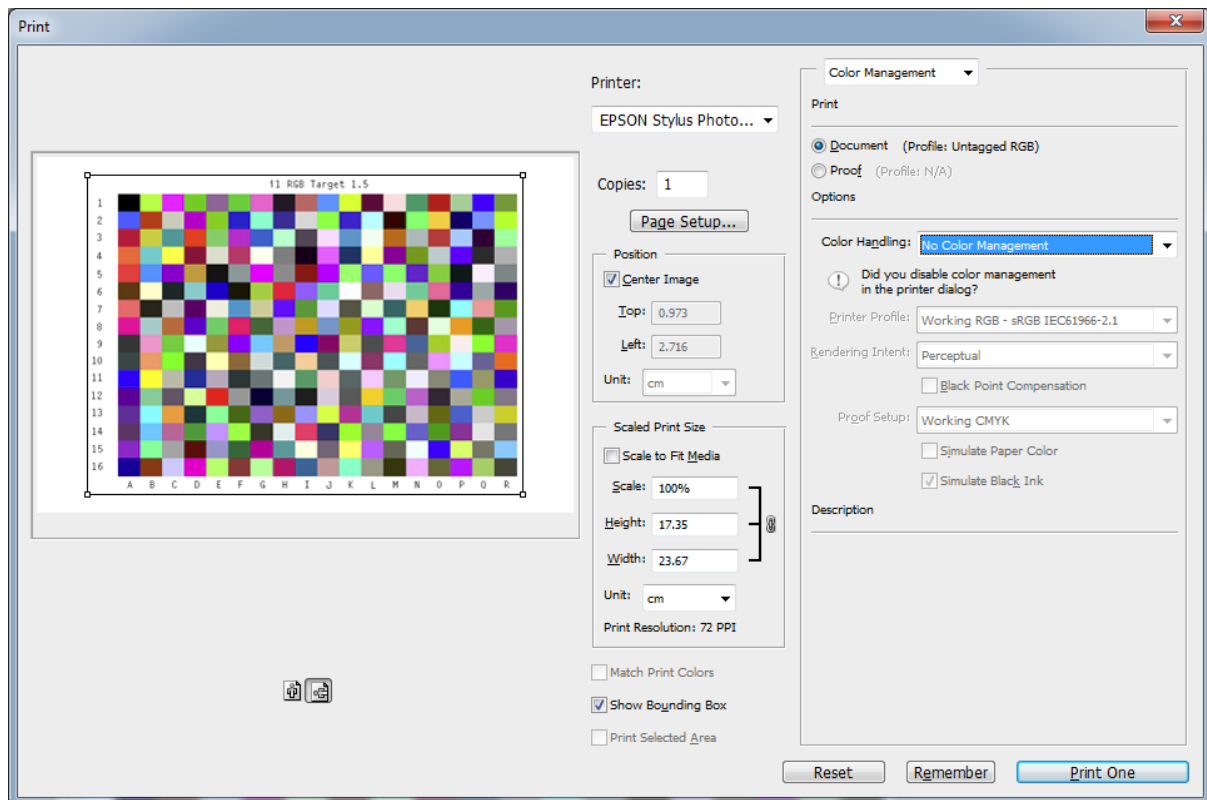


Once this is complete you may select **OK** and return to the previous window.

No select the Paper tab at the top of this window to set up the paper size and orientation. Make sure you select you **Paper Source** and select **Landscape** as your paper orientation. If needed go to the **Utility** menu and perform a nozzle check and any necessary head cleaning before moving on to the next stage of printing your profiling targets. Click **OK**.



Now you will be returned to the original **Print** dialog box. You will see the target is now correctly orientated.



Make sure that Color Management is selected in the top right drop down menu. In the **Print section Document** should be selected and say (**Profile: Untagged RGB**). Then in **Color Handling** select **No Color Management**.

You are now ready to print your first profiling target so go ahead and select **Print**.

When the target has been printed please allow it to dry for at least 2 hours but preferably overnight before packaging it securely in a stiffened envelope. We cannot scan prints with damage to the printed area. You should also mark clearly on the white edge to the left or right of the profile the paper/ink/printer/media settings used so that if we are creating more than one profile for you they do not become confused.