

How to Print your targets using Photoshop CS5 or later

Since the introduction of Adobe Photoshop CS5, the usual way of selecting **No Color Management** in the Printer handling section of the print dialog box is no longer available so you must instead use the free **Adobe Color Printer Utility (ACPU)**. Here at Custom Profiles we have embraced this change and recommend in fact you use this program for all printing of test targets as it simplifies the process of printing without applying colour profiles.

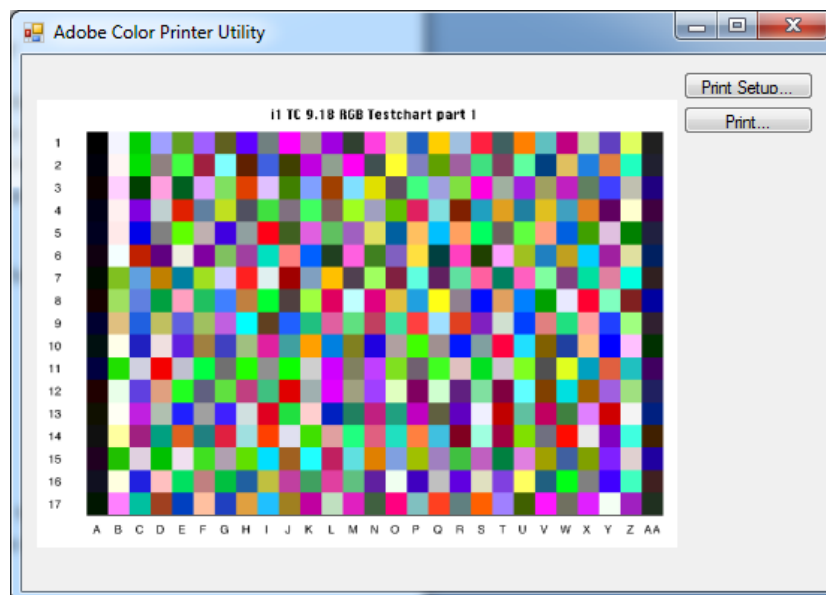
Firstly you will need to obtain a copy of ACPU which is freely available from Adobe. It can be downloaded at the following website for both Windows and MAC:

http://kb2.adobe.com/cps/834/cpsid_83497.html

Using ACPU

Once you have downloaded and installed ACPU, go ahead and open it. You will be presented with the **Please select a TIFF file to print** dialog box which is a basic open file dialog box. Navigate to and open the target file you wish to print.

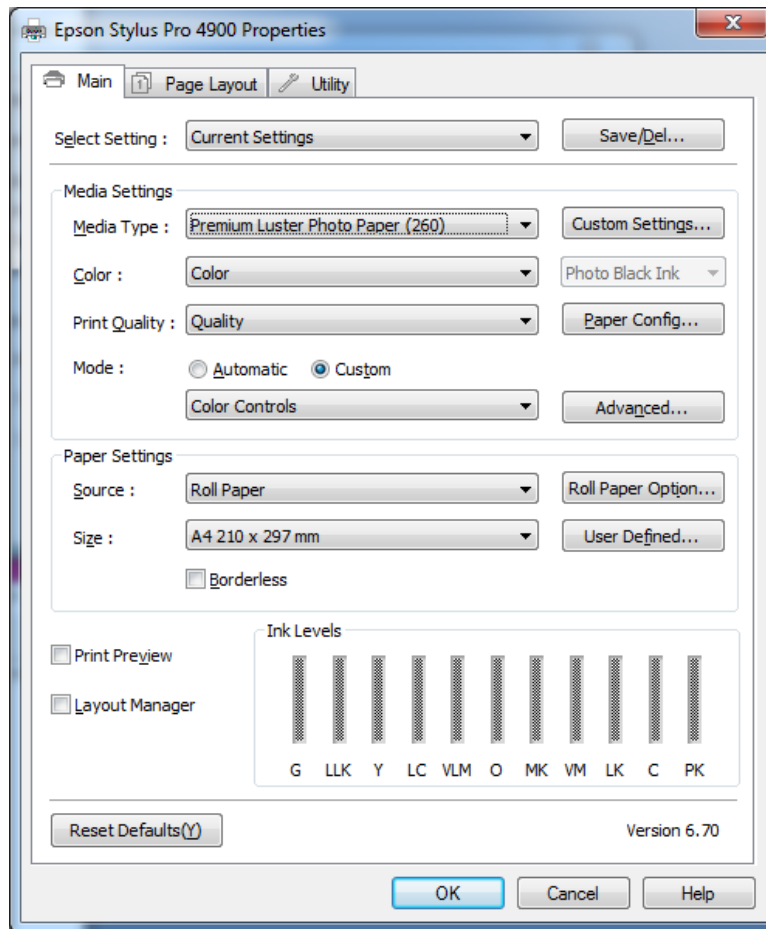
In this example we have opted for the first of the 2 targets you need to print for the 918 patch target.



Go ahead and click on **Print Setup** and select your paper source and **Landscape** as the orientation.

Now come out of that window and this time select **Print** and then select your printer and access the driver controls through selecting **Properties**.

The example screen grabs provided are for the Epson driver for the 4900 model printer. Whilst your printer may be different it will be broadly the same for Epson printers. For Canon, HP or other makes of printer, please consult your handbook for how to select options to turn off the printer driver colour management.



The goal here is to set the media settings at the same as you discovered through our **Media Settings Guide** to be optimal for your media so go ahead and select the correct **Media Type**. Under Print Quality we recommend selecting **Super Photo** and turning off **High Speed** if you are after exceptional quality or **Superfine** and leaving **High Speed** selected if you are after a compromise of cost savings/quality that will still lead to great prints.

For thicker modern papers like Ilford Galerie Gold Fibre Silk and other Fine Art matte or Baryta papers we recommend you make the additional step here of accessing the **Paper Config** option and increasing the **Paper Thickness** to 4 and the **Platen Gap** to Wide to ensure you avoid print head strikes. This will not be applicable on all printers and you should experiment to see what generates the best results for your system.

Finally on this window you need to go to the **Mode** section and select **Custom** and selecting **Off –no color adjustment** to prevent the printer driver making any colour changes.

Now you can select **OK** returned to a standard print dialog screen. Select **OK** again to print your target. Repeat this process for the number of targets you wish to print.